

# *Silverback Distribution Wholesale Catalog*

- ♦ Trailer Hardware & Accessories
- ♦ Towing & Tow Truck Products
- ♦ Tie Downs & Tow Straps
- ♦ Chain, Binders & Hooks
- ♦ Lifting Slings & Hardware
- ♦ Electric Winches
- ♦ Hand Tools & Power Tools
- ♦ Safety Flags
- ♦ Safety Vests
- ♦ Road Signs
- ♦ Cut off Wheels
- ♦ Grinding Wheels
- ♦ Locks
- ♦ Truck Tarps
- ♦ **and More....**



*Silverback Distribution  
102 C Pane Road  
Newington, CT 06111*

*Phone: 1 888 576 - 3131  
Fax: 1 860 372 - 4929  
Email: [info@silverback1.com](mailto:info@silverback1.com)  
Web Site: [www.silverback1.com](http://www.silverback1.com)*

**\*\*Please Note This catalog is a representative sample of all the products we have access to and distribute - if you don't see what you are looking for, please ask for anything you need - there's a good chance we can find it \*\***

*To our valued customers and prospective business partners:*

*Silverback Distribution has developed a reputation of servicing our customers with high quality products, delivered in a timely manner at a reasonable price.*

*Working closely with our customers and suppliers, we have been a catalyst in developing new products and making changes to existing products to ensure the items we supply meet or exceed the needs of the end user.*

*Utilizing over 30 years experience in retail, distribution and manufacturing we can help any customer set up plan-o-grams or develop product lines to carry that will maximize their return on investment. Whether the purchases are for resale or business use, Silverback works for our customers to make sure every dollar spent on our products will either make money or save time and money.*

*The reputation Silverback has created comes from implementing old fashioned business concepts - taking care of our customer is the top priority! We listen to your needs and challenges and we are happy to offer solutions that will help you grow and work more efficiently. We work hard to ensure you reach a "real person" when you call, if a message is left, we strive to return it promptly. Placing orders is as simple as making a phone call, sending a fax or email. Orders are filled accurately and delivered in a timely manner. Invoices are simple to read, accurate and always the lowest available price applied whether or not your PO has cited it.*

*We are human, and errors do occur, if a problem arises, we go to great lengths to correct it quickly to ensure your total satisfaction.*

*Thank you for taking the time to review this catalog and we look forward to doing business with you!*

*All the Best,  
Gary Schenck*

**\*\*Please Note This catalog is a representative sample of all the products we have access to and distribute - if you don't see what you are looking for, please ask for anything you need - there's a good chance we can find it \*\***

---

Abrasives - <b>Cut Off &amp; Grinding Wheels</b> .....	4
<b>Bungee Cords &amp; Rubber Straps</b> .....	5
Chain & Binders - <b>Grab Hooks, Slip Hooks &amp; Shackles</b> .....	6
Chemicals - <b>Brakleen, PB Blaster &amp; Litho Grease, RH Adhesive</b> .....	7
<b>Lifting Slings</b> .....	8
Locks - <b>Trailer Locks, Discus Locks &amp; Pad Locks</b> .....	9
Safety Equipment - <b>Vests, Hard Hats, Road Signs, Cones, Flags &amp; Lights</b> .....	10
<b>Truck Covers &amp; Tarps</b> .....	11
Tie Downs - <b>1" to 2" Webbing, Motorcycle / ATV</b> .....	12
Tie Downs - <b>Specialty Items, Kits, Bonnets &amp; Custom Straps</b> .....	13
Tie Downs Commercial - <b>Logistic Straps, Winch Straps &amp; Deep Storage Winch Ratchets</b> .....	14
Tie Downs - <b>Motorcycle / ATV plus Chocks, Ramps &amp; Winches</b> .....	15
Trailer Accessories - <b>Ball Mounts &amp; Tow Balls</b> .....	16
Trailer Accessories - <b>D Rings</b> .....	17
Trailer Accessories - <b>E Track &amp; L Track and fittings</b> .....	18
Trailer Accessories - <b>Load Bars &amp; Shoring Beams</b> .....	19
Trailer Accessories - <b>Pintle Hitches</b> .....	20
Trailer Accessories - <b>Trailer Jacks</b> .....	21
Trailer Accessories - <b>Trailer Lighting</b> .....	22
Truck Accessories - <b>Racks, Boxes, Ramps and other items</b> .....	23
Winches - <b>Electric 12 V, 24 V &amp; Hydraulic</b> .....	24 - 26
<b>Hitches</b> .....	27

## Abrasives - Cutting & Grinding Wheels

Please refer to the United Abrasives / SAIT Catalog for a complete listing of all items for your abrasives needs

### Cutting Wheels



### Grinding Wheels



## Bungee Cords and EPDM Rubber Straps



### Bungee Cords

We carry a complete line of Bungee Cord Assemblies, Bulk Reels and various Hooks from manufacturers such as Keeper, Erickson and USA / Pro Grip. Below is a representative sample of the 100's of bungee products we carry. Please refer to the specific manufacturer's catalog for more products or call us and tell us what you are looking for and we'll find it!

**Premium Bungee Cords** - Premium Rubber covered by nylon or polypropylene outer jacket with vinyl coated steel hooks. Available in 13, 18, 24, 30, 36 & 48 inch lengths. Multi packs, Jars or Bulk Reels.

**Ultra Bungee Cords** - Hooks that are Stronger than Premium Bungee Cord, high quality bungee cord for durability and tension. Available in Bulk or individual clam shell - lengths of 18, 24, 32, 40 & 48 inches.

**Carabiner Bungee Cords** - The strongest bungee cord on the market. The Hook has as "spring gate" that locks secure making it easy to use and reliable. Available in 24, 36 & 48 in lengths - bulk packed or in individual clamshells.

**Marine Grade w/ Stainless Steel Hooks** - UV Resistant covering over premium rubber core attached to stainless steel hooks. Great for marine use, outdoor applications and long term durability. Available in 13, 18, 24, 32, 40 and 48 inch lengths.

**Bulk Bungee Cord & Hooks** - Bungee Cord on Reels, bulk hooks to "Make Your Own Bungee"



### EPDM Rubber Straps

**Rubber Strap & Hooks** - EPDM Rubber is a special blend of rubber designed to withstand the destructive elements associated with continual outdoor use in the trucking industry, construction sites, backyard and marine use.

Assemblies in 10, 15, 21, 31 & 41 inch lengths - with or without UPC tags.



## Chain, Binders, Hooks & Shackles

We carry and distribute a full line of chain, chain assemblies, binders, hooks, shackles and hardware. Please refer to the manufacturer catalogs for a full listing and pricing of all items to suit your needs.

### Bulk Chain and Chain Assemblies

Grade 80 - High Strength Alloy  
Grade 70 - Transport  
Grade 43 - High Test  
Grade 30 - Proof

We have **Made in USA** and import bulk chain and assemblies to fit every need.

Example:

Assembly lengths in grade 70

3/8" x 10' with grab hooks

3/8" x 14' with grab hooks

3/8" x 20' with grab hooks

5/16" x 14' with grab hooks

5/16" x 20' with grab hooks

1/4" x 10' with grab hooks

Custom assemblies and hook combinations delivered in about 5 days.



### Clusters, Hooks & Specialty Assemblies

Standard & Custom Clusters, Hooks and Assemblies are available for the Towing, Vehicle Recovery, Trailer Dealer and Auto Transportation industries.



Available in:

- Full Drum
- Half Drum
- Square Pail
- Round Pail
- Custom lengths

### Ratchet and Lever Binders

We have **Made in USA** and import binders to fit every need!!



See Price List For complete Listing and Prices.

### Hooks and Shackles

We have a huge selection of hooks, shackles, snaps and connection links.



## Chain, Binders, Hooks & Shackles

We carry and distribute a full line of chain, chain assemblies, binders, hooks, shackles and hardware. Please refer to the manufacturer catalogs for a full listing and pricing of all items to suit your needs.

### Bulk Chain and Chain Assemblies

Grade 80 - High Strength Alloy  
Grade 70 - Transport  
Grade 43 - High Test  
Grade 30 - Proof

We have **Made in USA** and import bulk chain and assemblies to fit every need.

Example:

Assembly lengths in grade 70

3/8" x 10' with grab hooks

3/8" x 14' with grab hooks

3/8" x 20' with grab hooks

5/16" x 14' with grab hooks

5/16" x 20' with grab hooks

1/4" x 10' with grab hooks

Custom assemblies and hook combinations delivered in about 5 days.



### Clusters, Hooks & Specialty Assemblies

Standard & Custom Clusters, Hooks and Assemblies are available for the Towing, Vehicle Recovery, Trailer Dealer and Auto Transportation industries.



Available in:

- Full Drum
- Half Drum
- Square Pail
- Round Pail
- Custom lengths

### Ratchet and Lever Binders

We have **Made in USA** and import binders to fit every need!!



See Price List For complete Listing and Prices.

### Hooks and Shackles

We have a huge selection of hooks, shackles, snaps and connection links.



## Chemicals

We carry and distribute chemicals that get the job done. Please call for pricing 1 888 576-3131.



### CRC

- Brakleen 19.5 oz - Removes Brake fluid, grease & oil. Cleans Fast / Dries Fast / Leaves no residue
- Brakleen Chlorine Free 14 oz - Non - Chlorinated Brakleen
- QD Electronic Cleaner 11 oz - Cleans and protects sensitive electronic equipment, helps prevent contact failure, plastic safe, leaves no residue.



### Cyclo

- Heavy Duty White Grease 11..5 oz - Lithium white grease, reduces wear, stops squeaks repels moisture.



### PB Blaster

- Quickly breaks loose the surface tension of frozen parts and protects against further rust.






## Lifting Slings

### Web Slings



General-purpose flat slings constructed of 100% heavy-duty polyester webbing. These slings are lightweight, less likely to scratch or damage the load, resist mildew and bacteria growth, and have excellent elongation properties versus nylon. For use in choker, vertical and basket hitches.

- Enlarged eyes allow for greater range of attachment points, greater ease of use and performance
- Synthetic identification tag provides required OSHA information and resists damage from natural elements and chemicals

				
Part No.	Webbing Width	Vertical	Choker	Basket
EE2HD-01	1"	3,200	2,500	6,400
EE2HD-02	2"	6,400	5,000	12,800
EE2HD-03	3"	8,600	6,900	17,200
EE2HD-04	4"	11,500	9,200	23,000



- Inspect sling for damage before each use.
- Do not use if capacity tag is missing or not readable.
- Sling should be protected from abrasive surfaces.
- Do not load sling in excess of rated capacity.
- Consult manufacturer's sling angle chart for capacity reduction due to sling angle.
- Do not expose to temperatures above 194° F (90° C).
- Do not use near caustics.

\*Rated Capacity in Pounds

### Round Slings



Our most versatile and flexible sling, constructed of high tenacity polyester fibers, which are protected by a double jacket polyester cover. Pliable nature of the sling allows it to conform and mold to irregular shaped loads affording operator greater ease of use. Endless in configuration, our round slings are ideal for choker, vertical and basket hitches.

- High strength-to-weight ratio
- Wear points can be shifted to extend life of sling
- Color coding easily allows operator to identify lifting capacity of sling, eliminating any guess work.

					
Part No.	Color Code	Vertical	Choker	Basket	Min. Length
ENR-10	Purple	2,600	2,100	5,200	3'
ENR-20	Green	5,300	4,200	10,600	3'
ENR-30	Yellow	8,400	6,700	16,800	3'
ENR-40	Grey	10,600	8,500	21,200	3'
ENR-50	Red	13,200	10,600	26,400	3'
ENR-60	Brown	16,800	13,400	33,600	6'
ENR-70	Blue	21,200	17,000	42,400	6'
ENR-80	Orange	25,000	20,000	50,000	6'



- Inspect sling for damage before each use.
- Do not use sling if cover is damaged, exposing core fibers, or if heat or chemical damage is visible.
- Do not use if capacity tag is missing or not readable.
- Roundslings shall always be protected from being cut by corners, edges or protrusions.
- Sling should be protected from abrasive surfaces.
- Do not load sling in excess of rated capacity.
- Consult manufacturer's sling angle chart for capacity reduction due to sling angle.
- Do not expose to temperatures above 194° F (90° C).
- Do not tie roundslings into knots, or join by knotting.
- Do not use near caustics.

\*Rated Capacity in Pounds

## Locks

### Trailer Coupler Locks & Ball Mount Locks

#### "L" Handle Coupler Locks

63226

3020-077-3T

3015-048-3

#### Universal Coupler Lock's

#### Curt's Coupler Lock

#### Disc Locks

#### Dog Bone Locks

F-542

### Padlocks

#### Weather Resistant Lock

#### Brass Resettable Combination Lock

#### Laminated Locks and Lock Sets

### Trailer / Wheel Locks

#### "J" Wheel Lock

#### Wheel Immobilizer

#### Ladder Locks w/ Pad Lock

3020-065-2, 3050-029-2 &amp; 3050-116-2

182-40361-4T

3020-054-4

3020-053-3

181-50051-4

181-50061

183-70201-4

182-40201-4

185-67607-4

3020-057-2

3050-021-3T

3020-057-2

3029-059-1





## Safety Equipment

### Safety Cones

**28" Traffic Cone:** Color impregnated into plastic - two (2) stripe reflective tape.

**18" Traffic Cone:** Color impregnated into plastic - Heavy Base.



Patented design  
bonds cone to base

### Traffic Signs and Stands

**48" Traffic Sign:** Standard legends and customer legends and available, includes bows and pockets.

**Hand Held Stop / Slow Signs:** Two sided Signs - long and short poles available

**Orange Flags:** All sizes of flags with or without poles, grommetted and durable.

**Caution Tape:** Hi-Visibility caution tape and conspicuity tape.

**Triangles:** Aluminum Hi-Visibility Triangle for Trailer, Gates & Heavy Equipment

**Triangle Kits:** Three (3) Pack folding safety triangle kits. DOT Compliant

**Fire Extinguishers:** A,B,C - D.O.T. compliant for all uses. (not shown)



MSA Cap  
Yellow



MSA Cap  
Hi-Viz Lime

### Safety Vests

Lime Green and Orange w/ Reflective Stripes -Class II - All Velcro adjustable available

### Hard Hats

Six (6) Point Suspension All Colors & Styles available.



### Gloves

Leather Work Gloves and Safety Grip Gloves



### Safety Glasses

Safety Glasses by the case!! Safety eye protection at an affordable price.



## Safety Equipment

### Safety Cones



Patented design  
bonds cone to base

### Traffic Signs and Stands

**48" Traffic Sign:** Standard legends and customer legends and available, includes bows and pockets.

**Hand Held Stop / Slow Signs:** Two sided Signs - long and short poles available

**Orange Flags:** All sizes of flags with or without poles, grommetted and durable.

**Caution Tape:** Hi-Visibility caution tape and conspicuity tape.

**Triangles:** Aluminum Hi-Visibility Triangle for Trailer, Gates & Heavy Equipment

**Triangle Kits:** Three (3) Pack folding safety triangle kits. DOT Compliant

**Fire Extinguishers:** A,B,C - D.O.T. compliant for all uses. (not shown)



### Safety Vests

### Hard Hats

### Gloves

### Safety Glasses

Safety Glasses hv the case!! Safety eye protecti an affordable price.



MSA Cap  
Yellow



MSA Cap  
Hi-Viz Lime





## Safety Equipment

### Safety Cones

**28" Traffic Cone:** Color impregnated into plastic - two (2) stripe reflective tape.

**18" Traffic Cone:** Color impregnated into plastic - Heavy Base.



Patented design  
bonds cone to base

### Traffic Signs and Stands

**48" Traffic Sign:** Standard legends and customer legends and available, includes bows and pockets.

**Hand Held Stop / Slow Signs:** Two sided Signs - long and short poles available

**Orange Flags:** All sizes of flags with or without poles, grommetted and durable.

**Caution Tape:** Hi-Visibility caution tape and conspicuity tape.

**Triangles:** Aluminum Hi-Visibility Triangle for Trailer, Gates & Heavy Equipment

**Triangle Kits:** Three (3) Pack folding safety triangle kits. DOT Compliant

**Fire Extinguishers:** A,B,C - D.O.T. compliant for all uses. (not shown)



MSA Cap  
Yellow



MSA Cap  
Hi-Viz Lime

### Safety Vests

Lime Green and Orange w/ Reflective Stripes -Class II - All Velcro adjustable available

### Hard Hats

Six (6) Point Suspension All Colors & Styles available.



### Gloves

Leather Work Gloves and Safety Grip Gloves



### Safety Glasses

Safety Glasses by the case!! Safety eye protection at an affordable price.



## Safety Equipment

### Safety Cones

**28" Traffic Cone:** Color impregnated into plastic - two (2) stripe reflective tape.

**18" Traffic Cone:** Color impregnated into plastic - Heavy Base.



Patented design  
bonds cone to base

### Traffic Signs and Stands

**48" Traffic Sign:** Standard legends and customer legends and available, includes bows and pockets.

**Hand Held Stop / Slow Signs:** Two sided Signs - long and short poles available

**Orange Flags:** All sizes of flags with or without poles, grommetted and durable.

**Caution Tape:** Hi-Visibility caution tape and conspicuity tape.

**Triangles:** Aluminum Hi-Visibility Triangle for Trailer, Gates & Heavy Equipment

**Triangle Kits:** Three (3) Pack folding safety triangle kits. DOT Compliant

**Fire Extinguishers:** A,B,C - D.O.T. compliant for all uses. (not shown)



MSA Cap  
Yellow



MSA Cap  
Hi-Viz Lime

### Safety Vests

Lime Green and Orange w/ Reflective Stripes -Class II - All Velcro adjustable available

### Hard Hats

Six (6) Point Suspension All Colors & Styles available.



### Gloves

Leather Work Gloves and Safety Grip Gloves



### Safety Glasses

Safety Glasses by the case!! Safety eye protection at an affordable price.





## Safety Equipment

### Safety Cones

**28" Traffic Cone:** Color impregnated into plastic - two (2) stripe reflective tape.

**18" Traffic Cone:** Color impregnated into plastic - Heavy Base.



Patented design  
bonds cone to base

### Traffic Signs and Stands

**48" Traffic Sign:** Standard legends and customer legends and available, includes bows and pockets.

**Hand Held Stop / Slow Signs:** Two sided Signs - long and short poles available

**Orange Flags:** All sizes of flags with or without poles, grommetted and durable.

**Caution Tape:** Hi-Visibility caution tape and conspicuity tape.

**Triangles:** Aluminum Hi-Visibility Triangle for Trailer, Gates & Heavy Equipment

**Triangle Kits:** Three (3) Pack folding safety triangle kits. DOT Compliant

**Fire Extinguishers:** A,B,C - D.O.T. compliant for all uses. (not shown)



MSA Cap  
Yellow



MSA Cap  
Hi-Viz Lime

### Safety Vests

Lime Green and Orange w/ Reflective Stripes -Class II - All Velcro adjustable available

### Hard Hats

Six (6) Point Suspension All Colors & Styles available.



### Gloves

Leather Work Gloves and Safety Grip Gloves



### Safety Glasses

Safety Glasses by the case!! Safety eye protection at an affordable price.



## Truck Covers & Tarps

Contact us for specifics on the Truck & Dump Body make, model and size. We'll ensure you get the right tarp that fits your needs. Suppliers are Donovan Tarps and Aero Industries.



## Tarps

We have a full line of grommated tarps that will fit your needs:

- Blue Tarps - All Purpose 8 x 8 weave
- Camo Tarps - Heavier 10 x 10 weave
- Silver Tarps - Heavy Duty 14 x 14 weave
- Extra Large Sizes available
- Tarp clips and Bungee Balls too





## Tie Downs 1" to 2" Webbing

We have a tremendous selection of web based tie downs. Working with a variety of manufacturers we can supply you with any tie down that will fit your needs. Below is a sample of products we carry and distribute - Please call for a Full List and Pricing.

**Motorcycle / ATV Tie Downs:** Available in:  
1", 1.5" & 1.75" webbing with Ratchet, Cam Buckles, "S" Hooks, J Hooks and Snap Hooks - soft tie and soft tie extensions.

**Four (4) Pack Tie Downs:** Available in:  
Rated capacities of:  
900 lb Cam Buckle or Ratchet  
1200 lb Ratchet - camo  
1500 lb Ratchet

**Ratchet Tie Downs:** Available in:  
Light Duty 1" wide x 6' to 16' long, with a variety of hooks and ratchets.

Medium Duty 1.5" & 1.75" wide x 8' to 15' long, with a variety of hooks and ratchets.

Heavy Duty 2" x 8' to 40' long with a variety of hooks and ratchets.

Ask about Rhino Web, lasts twice as long as standard webbing, abrasion and cut resistant!!

**Cam Buckle Tie Downs:** Cam Buckles or Quick Release Buckles are quick and easy to use to tie down a wide variety of items.

1" and 2" wide with hooks, webbing and cam.

**Camo Ratchet and Cam Buckle:** Full line of Camouflage color tie downs available from 1" cam to full 10,000 lb rated ratchet tie down

**Lashing Straps & Light Duty:** Quick and easy to use, better than rope or twine. Great for camping, roof racks or strapping luggage to carriers.





## Tie Downs - Specialty Items, Kits and Custom



### Dolly Straps

- Designed for R.V. Dollies.
- Several models to choose from.
- Fits for all dollies and tire sizes



### Axle Straps

- 24" Heavy Duty
- 36" Heavy Duty
- 36" Super Duty 3 Ply
- 36" Tow Truck Special  
(3 ply w/ Special "Rub Protector" & 2x thru D Ring for long life)



### Wheel Bonnets

- Outside the wheel tie down kits
- Over-the-wheel bonnets
- Flat hooks or twisted snap hooks
- Easy to use & very secure



### Four (4) Piece Auto Tie Down Kit



Includes: (2) Front Adjustable Axle Strap w/ Cordura Sleeve & Twisted Snap Hooks and  
(2) Rear Adjustable Ratchet Straps w/ Cordura Sleeve & Twisted Snap Hooks  
Made in the USA

2 - Rear Adj Ratchet Straps



2 - Front Adj Axle Straps



Four (4) Piece Auto Tie Down Kit:  
SB74135KT



### Made in the USA - Custom Tie Downs and Bonnets



Its Easy !! Tell us the Length of the Tie Down, Ratchet Size and Hooks you want.  
We will have it to you in just a few days at a cost you'll be please with!!



## Tie Downs - Commercial Use

Rated Capacities from 10,000 lbs to 20,000 lbs for Ratchet Tie Downs and  
10,000 lbs to 16,200 lbs for Winch Straps

### Winch Straps

- 27' & 30' Lengths
- 2", 3" & 4" Widths
- Standard or *Rhino Web*
- Flat Hook
- Gr. 70 Chain w/ Grab Hook
- D-Ring w/ Grab Hook
- D-Ring
- Sewn Loop
- Roll Off Hook



### Ratchet Straps

- 27' & 30' Lengths
- 2", 3" & 4" Widths
- Standard Handle, Wide Handle, Long Handle & Long Wide Handle
- Flat Hook
- Gr. 70 Chain w/ Grab Hook
- D-Ring w/ Grab Hook
- D-Ring
- Sewn Loop
- Roll Off Hook



### Logistic Straps

- Cam Buckle or Ratchet
- Two (2) Inches Wide
- 12', 16' and 20' lengths
- E Track Fitting Ends
- Length Color Coded



### Winches

- Weld on Winch
- Portable Winch
- Standard Sliding & Winch Track



### Accessories

- Winch Bars
- Corner Protectors
- Kwik Winders - not pictured



## Tie Downs - Motorcycle / ATV - Plus Chocks & Winches

Complete line of Motorcycle and ATV Tie Down, Chocks, Ramps & Winches



### Motorcycle Wheel Chocks

- Black Widow - Professional Line
- Range 3.5", 5.5" & 6.5" with removable hardware

### Tie Downs

- 05721- 8' x 1" Ratchet w/ Soft Tie - 2 pk.
- 05737- 8' x 1.25" Ratchet w/ latch hook & d-ring - 2 pk
- 05723- 8' x 1.5" Ratchet w/ snap hooks & d-ring - 2 pk
- 03518 - Camo 12' x 1" w/ Ratchet & S Hooks - 2 pk
- 05729 - Soft Tie Extensions



### Superwinch - LT2000 ATV Kit (includes everything shown)



### Superwinch - ATV 2500 Kit (includes everything shown)





## Trailer Accessories - Ball Mounts and Trailer Balls



P/N	Description	Receiver (in)	Hole Size (in)	Length (in)	Drop (in)	M.V.L.	M.G.T.W.
1803017	Deep Drop Ball Mount	2.00	1.00	10.00	8.00	600 lbs.	6,000 lbs.
1803019	Deep Drop Ball Mount, Solid Shank	2.00	1.00	10.25	10.25	350 lbs.	5,000 lbs.
1803007	Straight Ball Mount	2.00	1.00	10.00	2.00	600 lbs.	6,000 lbs.
1803005	Straight Ball Mount	2.00	1.00	8.00	2.00	600 lbs.	6,000 lbs.
1803006	Straight Ball Mount, Chrome Plated	2.00	1.00	8.00	2.00	600 lbs.	6,000 lbs.
1803013	High-Low Ball Mount	2.00	1.00	10.00	4.00	600 lbs.	6,000 lbs.
1803010	High-Low Ball Mount	2.00	1.00	8.00	4.00	600 lbs.	6,000 lbs.
1803011	High-Low Ball Mount, Chrome Plated	2.00	1.00	8.00	4.00	600 lbs.	6,000 lbs.
1803015	Deep Drop Ball Mount	2.00	1.00	10.00	6.00	600 lbs.	6,000 lbs.
1803016	Deep Drop Ball Mount, Chrome Plated	2.00	1.00	10.00	6.00	600 lbs.	6,000 lbs.
1803051	Heavy-Duty Solid Ball Mount 2" Max Drop, 1-1/4" Hole	2.00	1.25	15.00	2.00	2,000 lbs	20,000 lbs
1803050	Heavy-Duty Solid Ball Mount 2" Max Drop, 1" Hole	2.00	1.00	15.00	2.00	2,000 lbs	20,000 lbs
1803055	Heavy-Duty Solid Ball Mount 4" Max Drop, 1" Hole	2.00	1.00	15.00	4.00	2,000 lbs	20,000 lbs
1803056	Heavy-Duty Solid Ball Mount 4" Max Drop, 1-1/4" Hole	2.00	1.25	15.00	4.00	2,000 lbs	20,000 lbs
1803058	Heavy-Duty Solid Ball Mount 6" Max Drop, 1" Hole	2.00	1.00	15.00	6.00	1,700 lbs	17,000 lbs
1803059	Heavy-Duty Solid Ball Mount 6" Max Drop, 1-1/4" Hole	2.00	1.25	15.00	6.00	1,700 lbs	17,000 lbs
D-22	Universal Ball Mounts	2.00	1.00	10.25	2.00	600 lbs.	6,000 lbs.
D-23	Universal Ball Mounts	2.00	1.00	10.25	4.00	600 lbs.	6,000 lbs.
D-24	Universal Ball Mounts	2.00	1.00	10.25	6.00	600 lbs.	6,000 lbs.
D-122	MAGNUM V One Piece Forged Ball Mounts	2.00	1.25	8.25	2.00	1,200 lbs	12,000 lbs
D-124	MAGNUM V One Piece Forged Ball Mounts	2.00	1.25	8.25	4.00	1,200 lbs	12,000 lbs
D-126	MAGNUM V One Piece Forged Ball Mounts	2.00	1.25	8.25	6.00	1,200 lbs	12,000 lbs
D-2525	Super Duty Ball Mounts	2.50	1.25	9.75	3.00	1,000 lbs	10,000 lbs
D-2526	Super Duty Ball Mounts	2.50	1.25	10.00	5.00	1,000 lbs	10,000 lbs
D-2527	Super Duty Ball Mounts	2.50	1.25	10.25	8.00	1,000 lbs	10,000 lbs



### Trailer Balls

- Full Line of Trailer Balls sizes 1 7/8" to 3"
- Stainless Steel, Chrome, Zinc & Raw Steel
- Shank Diameters 3/4" to 1 1/4"
- Shank Length 1 3/4" to 3 1/2" (some w/1" or 2" rise)
- M.G.T.W. 2,000 lbs to 30,000 lbs
- Bulk or Packaged
- See chart in Price List for Details

## Trailer Accessories - D Rings

\*\* See Price List for Full Line and Pricing on D-Rings \*\*



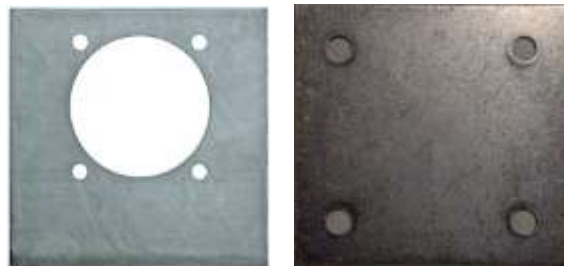
### D-Rings

- Rope Rings & Lashing Rings
- Bolt on D-Rings
- Weld on D-Rings
- Recessed Floor Mount Rings
- Pan Fitting w/ D-Rings
- Backing Plates



### Bed Bolts & Backing Plates

- 5/8" - Flush Mount Bed Bolt
- 1/2" - Flush Mount Bed Bolt
- 3/8" - Flush Mount Bed Bolt
- Recessed Floor Mount Plate
- Flat Backing Plate



## Trailer Accessories - E Track & L Track plus fittings

### E-Track

- KN43002: 10 ft Painted (Horizontal)
- KN43002-60: 5 ft Painted (Horizontal)
- KN43001: 10 ft Galvanized (Horizontal)
- KN2019: 10 ft Painted (Vertical)
- KN2019-60: 5 ft Painted (Vertical)
- Other track available please see the Kinedyne Catalog



### E-Track Accessories

EM59131

KE04316 yellow

DBRT0-2-6 (blue / blk)

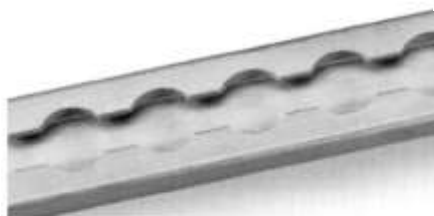
KNFE8301

KNFE8264-1

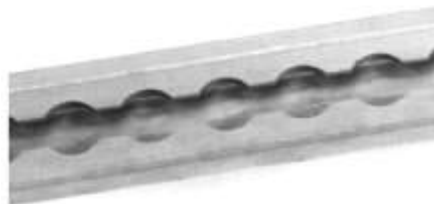
KN1945

SJETLH

### L-Track



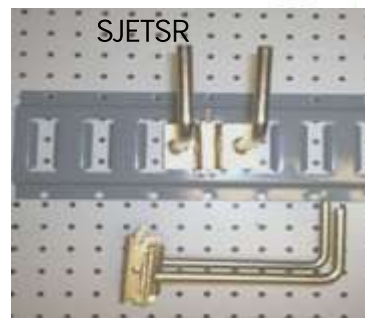
**Recessed Flat**  
**Part#SLFE750-01**



**Recessed Flat W/Flange**  
**Part#SLFE751-01**



**Surface MT W/Angled Sides**  
**Part#SLFE752-01**



### L-Track Accessories

SL32401

SL32507

KN32620

L Track cap



FE200784

FE200844



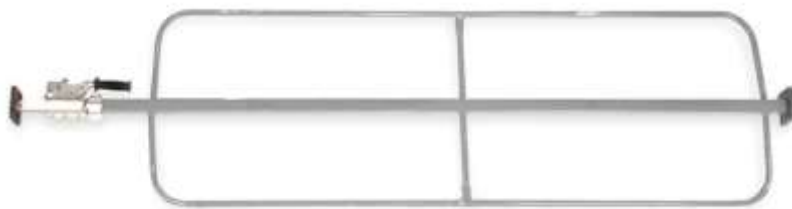
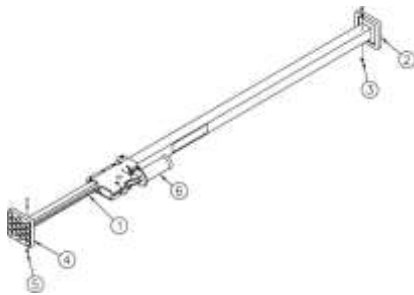


## Trailer Accessories - Load Bars & Shoring Beams

All sizes and styles of Load Bars and Shoring Beams - Custom sizes too - cut to order

### Commercial and Heavy Duty

- JB -101's - Jack Bars - Commercial Strength for Trailers - **Hoop set available 86" - 104"**
- 10085's - Saf-T-Lok Bars - **Steel or Alum. Hoops Sets welded or removable 90" - 105"**
- FE8066's - Beams for Shoring, Decking -Horse trailers - **Steel or Aluminum 85" - 106"**



### Light Duty Recreational

- Ratcheting Cargo Bars - 40" - 70" ...Available with Cargo Net too!
- Telescoping Cargo Bars - 45" - 70"
- USA / Pro Grip's Twist - N - Lok Cargo Bar - 40" - 70" - Very easy to use!!!



## Trailer Accessories - Pintle Hitches & Mount Plates

\*\*See Price List for the Full Listing and Prices of Pintle Hitches and Accessories\*\*



## Trailer Accessories - Trailer Jacks



## Tube Jacks, 2 1/2" &amp; 4" Square Jacks

*Top Wind and Side Wind "A Frame" Jacks**Marine Jacks 800 lbs & 1,200 lbs*



## Trailer Accessories - Trailer Lighting

### Marker Lights - Red and Amber



### Reflectors - Red and Amber



### Stop / Tail and Turn Lights and Kits (submersible too)



### LED - Stop / Tail and Turn Lights and Kits (submersible too)



### Work Lights



### Strobe Lights



# Truck Accessories - Racks, Boxes and Ramps and more

Call for details and pricing



Keeper Ladder Rack Lock



USA / ProGrip Cab Pad



Weld on Tubes &amp; Hitches



USA / ProGrip Rack Ratchet



Brinks Cargo Bags



Grit Tape and Safety Step



## Winches - Heavy Duty





## Winches - Commercial Grade

### Winches for a wide variety of uses:

- Vehicles - **4 x 4's Trucks, Jeeps, SUV's and more...**
- Trailers - Open Trailers, Flat Beds & Enclosed
- Salvage Vehicle Recovery Businesses
- **Landscaper's and Arborists**
- Demolition
- Construction

### Recommended Accessories:

#### Accessories

- Mount Plate
- Trailer Wiring Kit - front & rear
- Pulley Blocks & Clevis Hooks
- Wireless Control
- **30' Handheld Remote**

## Winches - “S” Series



# Hitches

## Receiver Hitches

CURT Manufacturing offers a full line of top-quality receiver hitches. Below are just a few of our advantages.



① WeatherTite™ construction prevents rusting from the inside out by sealing the main body.



② Back end of receiver is open for easy cleaning.



③ Precision robotic welding for superior strength and fit.



④ Step pad included on many applications.



⑤ Durable Powder Coat Finish resists rust & corrosion. Finishing our products to a high-gloss black or color finish involves an advanced in-house powder coat process in which the powder coating is baked on to the prepared surface. We adhere to a high standard in materials and application. We apply the optimum thickness of powder-coat film to all our finished products to ensure resistance to corrosion and abrasion.

### Class 1 Receiver Hitch (Ball mount, pin, & clip are included)

Up to 2,000 lbs. GTW and up to 200 lbs. TW.  
1 1/4" receiver.



### Class 2 Receiver Hitch (Ball mount, pin, & clip are included)

Up to 3,500 lbs. GTW and up to 350 lbs. TW.  
1 1/2" receiver.



### Class 3 Receiver Hitch (Ball mount, pin, & clip sold separately)

• Square Tube  
Up to 8,000 lbs. WC, 12,000 lbs. WD and ranging from 800 lbs. to 1,200 lbs. TW.  
2" receiver.

• Round Tube  
Up to 6,000 lbs. WC, 10,000 lbs. WD and ranging from 600 lbs. to 1,000 lbs. TW.  
2" receiver.

Available in **Custom Colors**



### Class 4 Receiver Hitch (Ball mount, pin, & clip sold separately)

Up to 10,000 lbs. WC, 12,000 lbs. WD and up to 1,200 lbs. TW.  
2" receiver.



### Class 5 Receiver Hitch (Ball mount, pin, & clip sold separately)

Up to 12,000 lbs. WC, 14,000 lbs. WD and up to 1,400 lbs. TW.  
2" receiver.



## Hitches

- Shipped direct to you in one day after you place the order.
- High Quality Powder Coating
- High Quality Welds
- Easy Install - most are **No Drill**
- Front Mounts and Hitch Boxes available too.
- T-Connectors and wiring components to complete the job.



# *Silverback Distribution*



Phone: 1 888 576-3131  
Fax: 1 860 372 -4929  
E-mail: [info@silverback1.com](mailto:info@silverback1.com)